

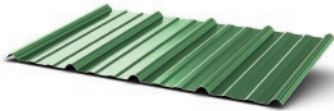
# PRODUCT OVERVIEW



Reed's products are designed to meet the most demanding performance requirements in the industry. Our prime panels are Metal Construction Association (MCA) certified and use a 25 year warranted Galvalume substrate and the industry leading 45 year siliconized modified polyester (SMP) paint system. Below is a list of some of our certifications and approvals:

- ◆ *Metal Construction Association (MCA certified)*
- ◆ *Highest ULL ratings for wind uplift, fire, and impact resistance*
- ◆ *Miami-Dade county approved*
- ◆ *Florida Building Code approved*
- ◆ *Texas Department of Insurance Approval*
- ◆ *Energy Star certified*

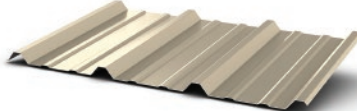
## Residential Rib



An industry leader in strength and durability, this popular and versatile panel is used in a wide range of applications including residential, commercial, and post-frame buildings. Designed with extra-wide ribs, Residential Rib provides strength and leak resistance under extreme wind and rain loads.

Gauge Options: 29, 26  
Finish Options: Unpainted Galvanized, Unpainted Galvalume, 45 yr. SMP

## PBR and IR Panels



Designed for industrial, commercial, and steel-frame building applications, the PBR and IR panels have the strength to perform on roof pitches as low as 1:12 and on spans up to 5 feet. The IR panels are designed for sidewall applications while the PBR panels have an added purlin bearing leg to provide better support. Used for roof and wall applications.

Gauge Options: 26, 24  
Finish Options: Unpainted Galvalume, 45 yr. SMP, Kynar

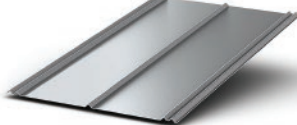
## M Panel



M Panel is a 36" wide exposed fastened panel suitable for both vertical and horizontal applications. This versatile corrugated panel can be installed over open framing or a solid substrate, providing endless design possibilities, including: wall, interior liner, soffit, and roof applications.

Gauge Options: 26, 24  
Finish Options: Unpainted Galvalume, Kynar

## 5V

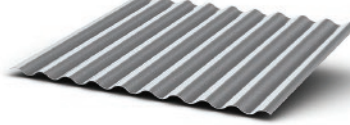


For generations, 5V roofing panels have been used on farm buildings and other rural projects. Today, this timeless design is being increasingly used for residential applications. Designed with an enhanced "U" over "V" profile to provide maximum leak resistance. Available striated or flat.

\*Special order item with limited colors available.

Economy Gauge Options: 29, 26, 24  
Finish Options: Unpainted Galvanized, Unpainted Galvalume, 45 yr. SMP

## 2 1/2 Corrugated

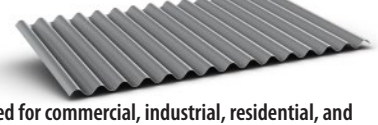


Corrugated panels are the original metal roofing and siding panels. Today, useage of these panels has expanded beyond their rural heritage, adding a traditional look to many restaurants, retail establishments, and other commercial buildings.

\*Special order item with limited colors available.

Economy Gauge Options: 29, 26, 24  
Finish Options: Unpainted Galvanized, Unpainted Galvalume, 45 yr. SMP

## 7/8 Corrugated

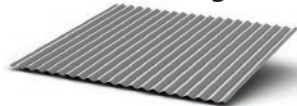


Designed for commercial, industrial, residential, and steel-framed building applications, the 7/8" Corrugated Panel provides architects and designers a corrugated profile option which can be installed as both a roof and a wall panel. The 7/8" corrugation height creates the structural integrity required to allow installation over a solid substrate or open framing.

\*Special order item with limited colors available.

Gauge Options: 26, 24, 22  
Finish Options: Unpainted Galvalume, 45yr. SMP, Kynar

## 1 1/4 Corrugated

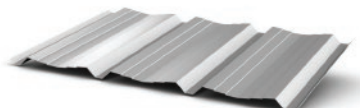


Designed for homes, restaurants and retail establishments and many other building applications, the 1 1/4" Corrugated Panel provides architects and designers a corrugated profile option which can be installed as both a roof and a wall panel. The 1 1/4" corrugation height creates the structural integrity required to allow installation over a solid substrate or open framing.

\*Special order item with limited colors available.

Gauge Options: Economy, 29, 26  
Finish Options: Unpainted Galvanized, Unpainted Galvalume

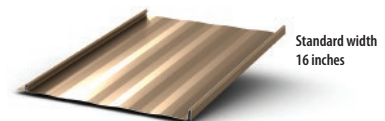
## A Panel



A Panel wall is a semi-concealed fastener wall panel that provides 36" width coverage. The panel has a valley shape between the major ribs on 12" centers. The minor striations between the ribs give added panel strength and adds to the appearance. It is an alternate look to the standard PBR and PBR Reverse wall panels.

Gauge Options: 26, 24  
Finish Options: Unpainted Galvalume, Kynar

## Perma-Lok



Standard width 16 inches

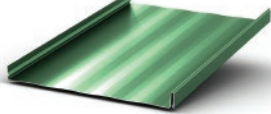
The Perma-Lok panel is a premium standing seam profile that is designed for distinctive, high-end looks. Very popular in residential and commercial applications, this panel installs without clips and snaps securely together with completely concealed fasteners. Our Perma-Lok features 1" ribs. \*On-site job roll form.

Gauge Options: 26, 24, Aluminum 0.032"  
Finish Options: Unpainted Galvalume, 45 yr. SMP, Kynar

# PRODUCT OVERVIEW



## SL150

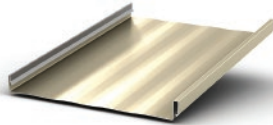


SL150 is a premium standing seam profile that features 1.5" ribs and is very popular in the commercial and high-end residential applications. SL150 is installed with clips that fasten to the roof deck allowing for a "floating" installation. Once secured, the panel ribs snap securely together with completely concealed fasteners.

\*Special order item with limited colors available.

Gauge Options: 26, 24, Aluminum 0.032"  
Finish Options: Unpainted Galvalume,  
45yr. SMP, Kynar

## Secure-Seam

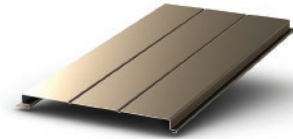


Standard width  
14 1/2 inches

Secure-Seam is a snap lock standing seam panel with 1.75" high ribs that can be used for architectural applications. The panel is secured with concealed clips and ribs that lock securely together. Secure-Seam can be specified as an accent feature or a total roof system for schools, shopping centers, banks, hotels, offices, and a variety of other applications. \*On-site job roll form.

Gauge Options: 26, 24, Aluminum 0.032", 0.040"  
Finish Options: Unpainted Galvalume,  
45yr. SMP, Kynar

## FL100

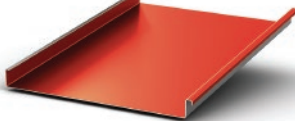


FL100 is a versatile panel that can be used on commercial and residential applications. The panel can be installed in a soffit application or vertically as a wall panel. Venting is available when used as a soffit panel. The interlocking mechanism allows for rapid installation and provides a flush appearance with completely concealed fasteners.

\*Perforated, - Dual, Single, Full

Gauge Options: 26, 24, Aluminum 0.032"  
Finish Options: Unpainted Galvalume,  
45yr. SMP, Kynar

## ML150

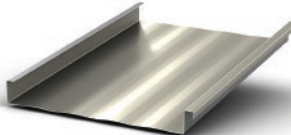


ML150 is a mechanically seamed standing seam panel with 1.5" high ribs. It is secured with concealed clips and the ribs are locked together using a rooftop seaming machine. ML150 can be curved to meet radius panel applications. ML150 is typically specified as an accent feature for schools, shopping centers, banks, hotels, offices, and a variety of other applications.

\*Special order item with limited colors available.

Gauge Options: 24, Aluminum 0.032"  
Finish Options: Unpainted Galvalume, Kynar

## Mech-Seam



Standard width  
16 inches

Mech-Seam is a mechanically seamed standing seam panel with 2" high ribs. It is secured with concealed clips and the ribs are locked together using a rooftop seaming machine. This standing seam system provides very high wind uplift resistance and structural integrity. Mech-Seam can be specified as an accent feature or a total roof system for schools, shopping centers, banks, hotels, offices, and a variety of other applications. \*On-site job roll form.

Gauge Options: 26, 24, 22, Aluminum 0.032", 0.040"  
Finish Options: Unpainted Galvalume, 45yr. SMP,  
Kynar, Open Framing, Solid Substrate

## TS-324™ Trapezoidal Panel



The TS-324™ Trapezoidal Panel provides superior wind and weather protection under all roof loading conditions. Typically installed over open framing, the profile maintains its structural integrity with a coverage of 24". Its ¼:12 minimum slope recommendation is the lowest of all metal roofing profiles offered.

Gauge Options: 24, 22  
Finish Options: Unpainted Galvalume,  
Kynar

\*\*Longer lead times may be required for the following panels. See sales representative for more information.

\* For all special order items, limited colors are available. See sales representative for more information.

Reed's is comprised of 9 manufacturing sites utilizing state-of-the-art technology and fabrication methods to provide unprecedented quality and service.

### Store Locations

#### Brookhaven, MS

19 E. Lincoln Drive NE.  
Brookhaven, Mississippi 39601  
(601) 823-6516

#### Benton, AK

12655 Interstate 30 South  
Benton, Arkansas 72015  
(501) 776-3825

#### Florence, AL

24350 Co Rd 14  
Florence, Alabama 35633  
(256) 764-7943

#### Horseshoe Beach, FL

4020 SW 449 St  
Horseshoe Beach, Florida 32648  
(352) 498-0100

#### Jackson, TN

1070 South Highland Ave  
Jackson, Tennessee 38301  
(731) 300-3200

#### Jasper, TX

3266 Hwy 96 N  
Jasper, Texas 75951  
(409) 384-5777

#### Scott City, MO

1616 E. Outer Rd.  
Scott City, Missouri 63780  
(573) 803-4700

#### Sulphur, LA

1909 Ruth Street  
Sulphur, Louisiana 70663  
(337) 625-5051

#### Tupelo, MS

120 Industrial Park Road  
Slatton, Mississippi 38866  
(662) 869-7797