

Product Overview



Reed's Metals products are designed to meet the most demanding performance requirements in the industry. Our prime panels use a 25-year warranted Galvalume substrate and the industry leading 45-year Siliconized Modified Polyester (SMP) paint system. Panels are UL tested for wind uplift, fire, and impact resistance. Visit our website reedsmetals.com for certifications and approvals available on select panels.

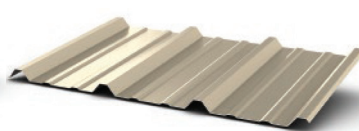


Residential Rib

This popular and versatile panel is used in a wide range of applications, including residential, commercial, and post-frame buildings. Residential Rib provides strength and leak resistance under extreme wind and rain loads with proper installation.

Gauge Options: 29, 26

Finish Options: Unpainted Galvanized, Unpainted Galvalume, 45-yr. SMP



PBR and IR Panels

Designed for industrial, commercial, and steel-frame building applications, the PBR has the strength to perform on roof pitches as low as 1:12 and on spans up to 5 feet. The IR panels are designed for sidewall applications while the PBR panels have an added purlin bearing leg to provide better support. Used for roof and wall applications.

PBR Gauge Options: 26, 24

IR Gauge Option: 29

Finish Options: Unpainted Galvalume, 45-yr. SMP, Kynar

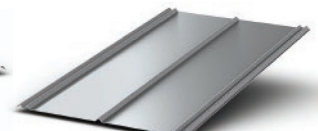


M Panel*

M Panel is a 36" wide exposed fastened panel suitable for both vertical and horizontal applications. This versatile corrugated panel can be installed over open framing or a solid substrate, providing endless design possibilities, including: wall, interior liner, soffit, and roof applications.

Gauge Options: 26, 24

Finish Options: Unpainted Galvalume, 45-yr. SMP, Kynar



5V

For generations, 5V roofing panels have been used on farm buildings and other rural projects. Today, this timeless design is being increasingly used for residential applications. Designed with an enhanced "U" over "V" profile to provide maximum leak resistance.

*Special order item with limited colors available.

Gauge Options: 29, 26

Finish Options: Unpainted Galvanized, Unpainted Galvalume, 45-yr. SMP



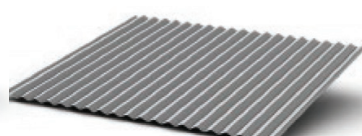
2 1/2" Corrugated

Corrugated panels are the original metal roofing and siding panels. Today, usage of these panels has expanded beyond their rural heritage, adding a traditional look to many restaurants, retail establishments, and other commercial buildings.

*Special order item with limited colors available in select locations.

Gauge Options: 29, 26, 24

Finish Options: Unpainted Galvanized, Unpainted Galvalume, 45-yr. SMP



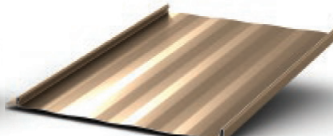
1 1/4" Corrugated

Designed for homes, restaurants and retail establishments and many other building applications, the 1 1/4" Corrugated Panel provides architects and designers a corrugated profile option which can be installed as both a roof and a wall panel. The 1 1/4" corrugation creates the structural integrity required to allow installation over a solid substrate or open framing.

*Special order item with limited colors available in select locations.

Gauge Options: 29, 26

Finish Options: Unpainted Galvanized, Unpainted Galvalume



Perma-Lok

The Perma-Lok panel is a premium standing seam profile that is designed for distinctive, high-end looks. Very popular in residential and commercial applications, this panel installs without clips and snaps securely together with completely concealed fasteners. Our Perma-Lok features 1" ribs. (On-site job roll form)

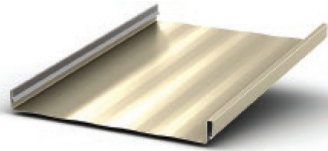
Standard width 16 inches

Gauge Options: 26, 24,

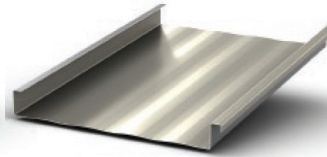
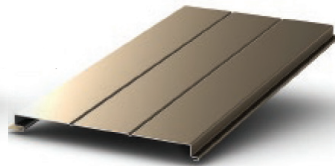
Aluminum 0.032"

Finish Options: Unpainted Galvalume, 45-yr. SMP, Kynar

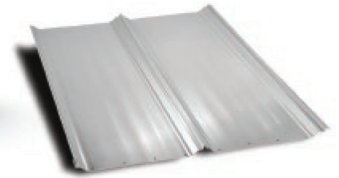
Product Overview



Standard width 14½"



Standard width 16"



Secure-Seam

Secure-Seam is a snap lock standing seam panel with 1¾" high ribs that can be used for architectural applications. The panel is secured with concealed clips and ribs that lock securely together. Secure-Seam can be specified as an accent feature or a total roof system for schools, shopping centers, banks, hotels, offices, and a variety of other applications. (On-site job roll form)

Gauge Options: 26, 24, Aluminum 0.032", 0.040"
Finish Options: Unpainted Galvalume, 45-yr. SMP, Kynar

FL100

100 is a versatile panel that can be used on commercial and residential applications. The panel can be installed in a soffit application or vertically as a wall panel. Venting is available when used as a soffit panel. The interlocking mechanism allows for rapid installation and provides a flush appearance with completely concealed fasteners.

*Perforated, - Dual, Single, Full

Gauge Options: 26, 24, Aluminum 0.032"
Finish Options: Unpainted Galvalume, 45-yr. SMP, Kynar

Mech-Seam

Mech-Seam is a mechanically seamed standing seam panel with 2" high ribs. It is secured with concealed clips and the ribs are locked together using a rooftop seaming machine. This standing seam system provides very high wind uplift resistance and structural integrity. Mech-Seam can be specified as an accent feature or a total roof system for schools, shopping centers, banks, hotels, offices, and a variety of other applications. (On-site job roll form)

Gauge Options: 26, 24, 22, Aluminum 0.032", 0.040"
Finish Options: Unpainted Galvalume, 45-yr. SMP, Kynar

TS-324™ Trapezoidal Panel **

The TS-324™ Trapezoidal Panel provides superior wind and weather protection under all roof loading conditions. Typically installed over open framing, the profile maintains its structural integrity with a coverage of 24". Its ¼:12 minimum slope recommendation is the lowest of all metal roofing profiles offered.

Gauge Options: 24, 22
Finish Options: Unpainted Galvalume, 45-yr. SMP, Kynar

*For all special order items, limited colors are available. See sales representative for more information.

**Longer lead times may be required for these panels. See sales representative for more information.

Reed's Metals locations utilize state-of-the-art technology and fabrication methods to provide unprecedented quality and service.



Scan the QR code or visit
reedsmetals.com/locations
for a list of Reed's Metals locations