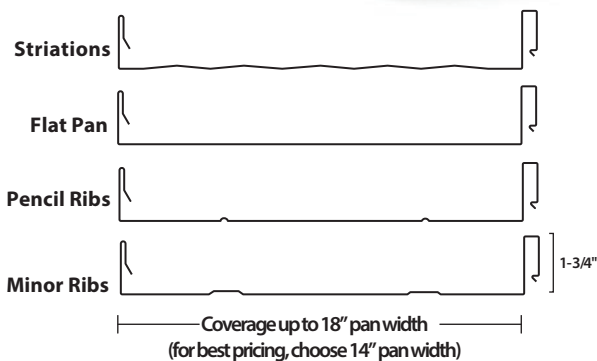
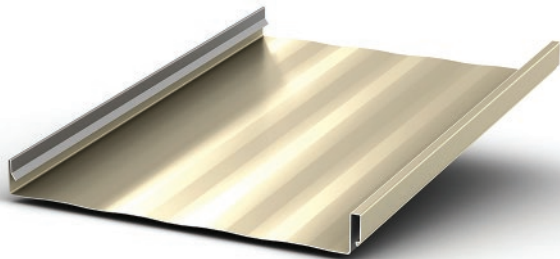


# SECURE-SEAM



Contact your sales representative for more information.



## Description

Reed's Secure-Seam metal roofing profile is a standing seam hidden-fastener metal roofing system used for architectural and light structural applications. The metal roofing panel is secured to the decking or framing with concealed clips. The roofing panel ribs snap securely together without the use of special tools. This locking system provides superior water-tightness and wind uplift resistance, especially important in area prone to inclement weather. As an additional benefit, the installation over clips allows minor movement of the panels to handle thermal expansion. Choose Reed's secure-seam profile for accent feature or total roof systems for homes, schools, shopping center, banks, hotels, offices and a variety of other applications.

## Specifications

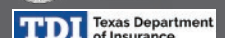
- Standing seam concealed fastener panel for roof applications
- Snap locking ribs
- Installs with clips
- 1:12 min. recommended roof pitch
- Suitable for solid deck or open framing
- Applicable for installations requiring weather-tightness warranties

## Substrates and Coatings

- 24 or 26 gauge steel substrate
- AZ50 core for painted products
- AZ55 core for acrylic-coated Galvalume
- 45-year silicone-modified polyester coil coating system (SMP) with no coastal set back; 45-year Trinar PVDF with no coastal set-back; or 35-year Kynar PVDF with coastal set-back.
- Also available in 0.032 or 0.040 painted aluminum at limited locations
- Available in Over 20 Colors

## Approvals and Certifications

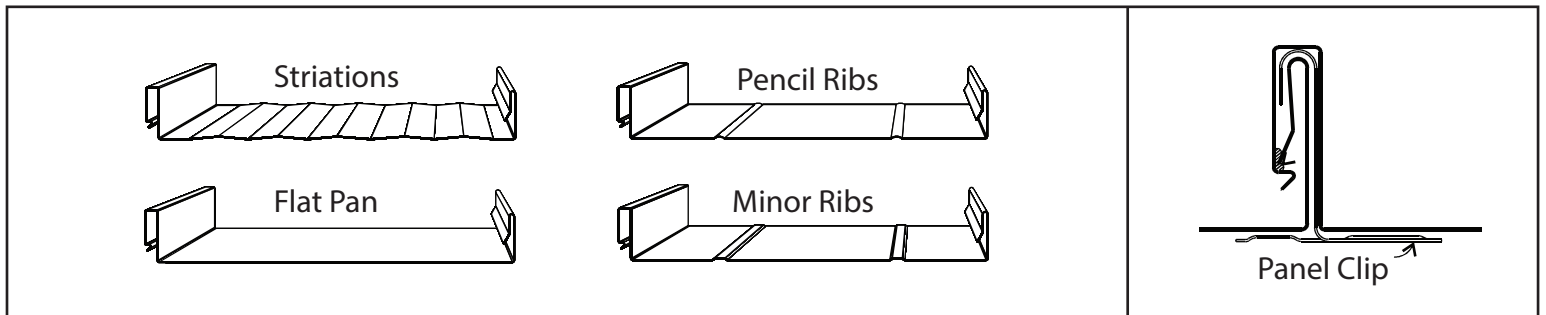
- Metal Construction Association Certified
- Florida Building Code Approved
- Texas Department of Insurance Approved
- Highest UL Ratings for Wind Uplift, Fire and Impact Resistance
- Product approved for use in Reed's IAS and MBMA certified structures



## CERTIFICATIONS & TESTING

- UL 580 Class 90 Wind Uplift
- UL 790 Fire Resistance Class A
- UL 2218 Impact Resistance Class 4
- Metal Construction Association (MCA) Certified
- Texas Department of Insurance Approved
- Florida Building Code Approved

## PANEL DETAILS



## INSTALLATION

### Description:

Secure-Seam is a snap-locking, hidden-fastener, standing seam profile that's easy to install and ideal for residential and commercial applications. Panels are installed by fastening clips to decking or framing. Fit the small rib of one panel over a row of clips, then lock the larger rib of the next panel over the small rib of the first panel. Without the need for seaming tools, the snap-lock feature allows for simple installation, saving installation costs. A Secure-Seam roofing system can be applied over open framing (up to 4'-0" on center) and over various solid substrates such as wood sheathing, wood planking, and metal decking. Minimum recommended slope is 3:12 pitch.

### Application:

Product can be applied to open framing (up to 4'-0" on center) and various solid substrate applications such as wood sheathing, wood planking, metal decking, and rigid insulation applied over metal decking. Minimum recommended slope is 3:12.

## STORAGE

For best performance, have panels manufactured at your job site for immediate installation. No storage necessary. If preferred, panels can be crated and shipped to job site. If panels are not to be used immediately, store inside a well-ventilated and dry location. Condensation or other moisture can cause water stains or white rust which detracts from the appearance of the product and may affect the product's performance.

Any outdoor storage is at the customer's own risk. If outdoor storage cannot be avoided, protect the metal using a canvas cover or waterproof paper. Never cover the metal with plastic as this will cause condensation to form.

**BEFORE BEGINNING INSTALLATION OF THIS PRODUCT, CHECK LOCAL BUILDING CODES.**

\*\* For more information, call (800) 581-4645 or visit our website at [www.reedsmetals.com](http://www.reedsmetals.com) \*\*