

METAL TO WOOD FASTENERS

WE PROTECT VALUE BY SECURING
METAL TO WOOD

ACCESSORIES

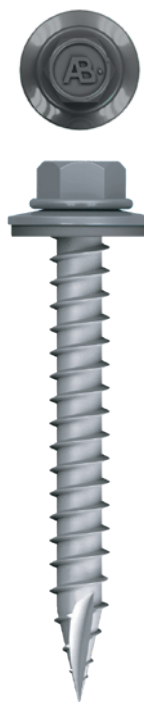
RIVETS, PIPE FLASHING, SEALANT,
CLOSURE, VENTING PRODUCTS

METAL TO METAL FASTENERS

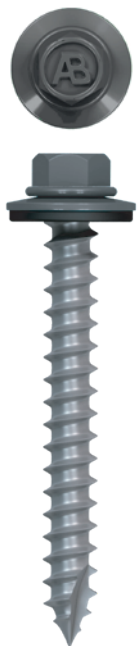
WE PROTECT VALUE BY SECURING
METAL TO METAL



- #12 ULTIMATE®**
- ZINC CAST HEAD WARRANTED AGAINST RED RUST FOR THE LIFE OF THE BUILDING
 - LOW PROFILE DESIGN BLENDS IN WITH THE PANEL
 - SPECIAL UNDERCUT DESIGN CONCEALS WASHER



- #10 WOODTITE**
- TYPE-17 POINT HELPS TO QUICKLY PENETRATE MULTIPLE LAYERS OF METAL PANELS
 - DEEP THREAD FORM FOR MAXIMUM PULLOUT RESISTANCE



- #14 WOODTITE™**
- TYPE-17 POINT EASILY PENETRATES LAPPED HIGH TENSION STEEL
 - DEEP THREAD FORM FOR MAXIMUM PULLOUT RESISTANCE



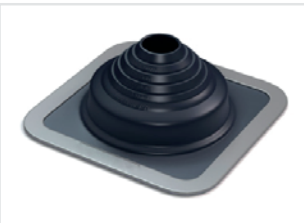
RIVETS



SEALANT



EPDM ROUND BASE



EPDM SQUARE BASE



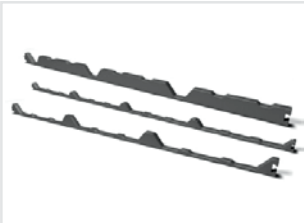
HI-TEMP



RETROFIT



BUTYL TAPE



CLOSURE



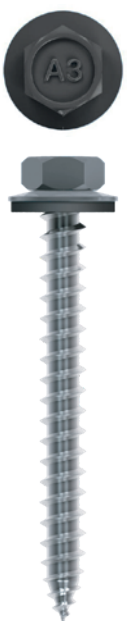
VERSAVENT



PROFILE VENT



- ULTIMATE®**
- ZINC CAST HEAD WARRANTED AGAINST RED RUST FOR THE LIFE OF THE BUILDING
 - SPECIAL UNDERCUT ENTRAPS SEALING WASHER



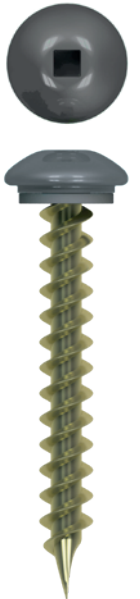
- 304 STAINLESS**
- SELF-TAPPING SCREW
 - USE WHERE CORROSIVE ENVIRONMENTS REQUIRE STAINLESS FASTENERS
 - AVAILABLE IN A, AB AND B POINTS
 - PLATED FOR LUBRICATION DURING INSTALLATION
 - DUCTILITY FOR HIGH STRESS APPLICATIONS
 - MADE FROM 100% DOMESTIC 304 STAINLESS WIRE
 - MADE IN USA



- 410 STAINLESS SD**
- MAGNETIC FOR USE WITH STANDARD SOCKET DRIVERS
 - BRIGHT HARDENED
 - 410 STAINLESS STEEL FOR CORROSION RESISTANCE
 - QUICK DRILLING
 - BONDED EPDM WASHER



- #10 ULTIMATE®**
- ZINC CAST HEAD WARRANTED AGAINST RED RUST FOR THE LIFE OF THE BUILDING
 - SPECIAL UNDERCUT DESIGN CONCEALS WASHER
 - DEKFAST® MULTI-SEAL™ WASHER: PROVIDES 4 SEALING POINTS TO ENSURE POSITIVE SEAL EVEN WHEN DRIVEN AT EXTREME ANGLES
 - IDEAL FOR 5V ROOF APPLICATIONS
 - HIGH MAJOR THREADS WITH LOW MINOR THREADS FOR ENHANCED PULLOUT VALUES



- [LOWPRO] 2™**
- COSMETICALLY APPEALING LOW HEAD HEIGHT BLENDS IN WITH PANEL
 - HEAD CONCEALS SEALING WASHER
 - WOBBLE FREE INSTALLATION
 - #3 DRIVER INSTALLS ALL SIZES
 - COARSE THREADS PROVIDE SECURE FASTENING INTO WOOD SUBSTRATE



- ENDURAFAST™**
- INTERRUPTED THREAD DESIGN PROVIDES 20% MORE RESISTANCE AGAINST FASTENER BACKOUT
 - WARRANTED AGAINST FASTENER CORROSION WHEN INSTALLED IN CCA OR ACQ LUMBER
 - MAGNETIC 410 STAINLESS ENSURES THE FASTENER STAYS IN THE SOCKET



- FLAT TOP®**
- HIGHER HEX PROVIDES POSITIVE SOCKET ENGAGEMENT
 - SPECIAL UNDERCUT DESIGN ENTRAPS SEALING WASHER



- ULTRA-Z™**
- INNOVATIVE TAPERED COMPRESSION POINT TECHNOLOGY PROVIDES AN ULTRA-SHARP CUTTING EDGE



- [LOW PRO] 2® SD**
- COSMETICALLY APPEALING, LOW HEAD HEIGHT BLENDS IN WITH PANEL
 - HEAD CONCEALS SEALING WASHER
 - WOBBLE FREE INSTALLATION
 - #3 DRIVER INSTALLS ALL SIZES
 - MATCHING LAP SCREW AVAILABLE



- #12 WOODFAST**
- LAP SCREW
 - SHARP POINT TO PENETRATE HIGH TENSILE LAPPED STEEL
 - BONDED EPDM WASHER
 - DOUBLE LEAD THREAD DESIGN



- LOW PROFILE PANCAKE**
- FOR ATTACHING CLIPS TO WOOD SUBSTRATE
 - TIGHTER FIT ON DRIVER BIT
 - AVAILABLE IN CARBON AND 410 STAINLESS STEEL FOR CORROSION PROTECTION
 - COARSE THREADS PROVIDE SECURE FASTENING INTO WOOD SUBSTRATE



- LOW PROFILE PANCAKE SD**
- FOR ATTACHING CLIPS TO METAL SUBSTRATE
 - TIGHTER FIT ON DRIVER BIT



- 1/4 X 7/8 FLAT TOP® LAP**
- HIGHER HEX PROVIDES POSITIVE SOCKET ENGAGEMENT
 - SPECIAL UNDERCUT ENTRAPS SEALING WASHER

www.reedsmetals.com

Please note, some Atlas products displayed may vary by Reed's Metals plant location. Please consult with a Reed's Metals Sales Representative to verify which Atlas items are available to order or readily in-stock. For a complete list of our product offerings and services visit www.reedsmetals.com

ASHLAND
OHIO

FLAT ROCK
NORTH CAROLINA

HOUSTON
TEXAS

SALEM
OREGON

PLEASE CONTACT US FOR ADDITIONAL PRODUCT DETAILS • INFO@ATLASFASTENERS.COM • (800) 321-6977 • WWW.ATLASFASTENERS.COM